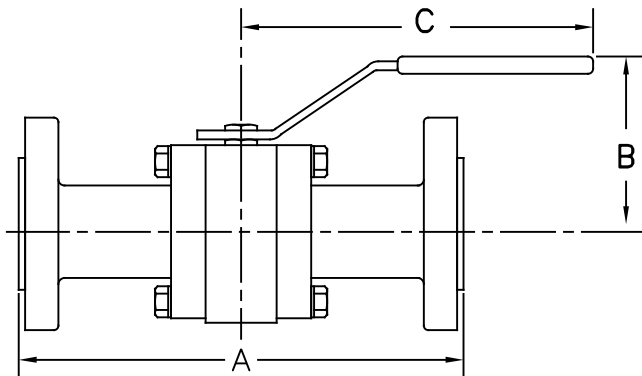


A	ADDED 1500#	1/8/07	DB
B	MEC 10013	5/26/10	DW
C	WAS 5.98	07/23/18	DW

NOTE: FACE-TO-FACE
DIMENSION "A" COMPLIES WITH
ASME B16.10 EXCEPT 2 1/2"R-
4"R CLASS 150 IS SAME AS
CLASS 300.



TOL. UNLESS OTHERWISE NOTED (IN.)
VA. END-TO-END LENGTH: $\pm \frac{1}{16}$ "
OTHER VA. DIM.: \leq NPS 2", $\pm \frac{1}{8}$ ";
NPS 2 1/2"~4", $\pm \frac{1}{4}$ "; >4", $\pm \frac{1}{2}$ "
VA.-ACT. ASSY & PIPING DIM.: $\pm \frac{1}{2}$ "

SIZE	DIMENSIONS IN INCHES			
	FLANGE	A	B	C
1/2"R	150#	4.25	2.64	5.4 (C)
	300#	5.50	2.64	5.4 (C)
	600#	6.50	2.64	5.4 (C)
	900/1500#	8.50	2.64	5.4 (C)
3/4"R	150#	4.62	2.76	5.4 (C)
	300#	6.50	2.76	5.4 (C)
	600#	7.50	2.76	5.4 (C)
	900/1500#	9.00	2.76	5.4 (C)
1"R	150#	5.00	3.15	7.6
	300#	6.50	3.15	7.6
	600#	8.50	3.15	7.6
	900/1500#	10.00	3.15	7.6
1 1/4"R	150#	5.50	3.62	7.6
	300#	7.00	3.62	7.6
	600#	9.00	3.62	7.6
	900/1500#	11.00	3.62	7.6
1 1/2"R	150#	6.50	4.25	8.9
	300#	7.50	4.25	8.9
	600#	9.50	4.25	8.9
	900/1500#	12.00	4.25	8.9
2"R	150#	7.00	4.45	8.9
	300#	8.50	4.45	8.9
	600#	11.50	4.45	8.9
	900/1500#	14.50	4.45	8.9
2 1/2"R	150#	*9.50 (B)	4.65	8.9
	300#	9.50	4.65	8.9
	600#	13.00	4.65	8.9
3"R	150#	**11.12 (B)	5.35	13.8
	300#	11.12	5.35	13.8
	600#	14.00	5.35	13.8
4"R	150#	***12.00 (B)	5.91	19.7
	300#	12.00	5.91	19.7
	600#	17.00	5.91	19.7

- (B) *2.5"R WAS 7.50 PRIOR TO APR. 2010
- (B) **3" WAS 8.00 PRIOR TO APR. 2010
- (B) ***4"R WAS 9.00 PRIOR TO APR. 2010

CUSTOMER ORDER # _____
 CUSTOMER _____
 TAG No. _____
 SIZE & MODEL # 1/2-4" 3000/7000R
 150#, 300#, 600#, 900# F.E.
 CERTIFIED _____ DATE _____



a division of Richards Industries
 CINCINNATI, OHIO U.S.A

www.marwinvalve.com

DR. BY	JLW	07/09/03	MD03114
CHK. BY			