

26-01276

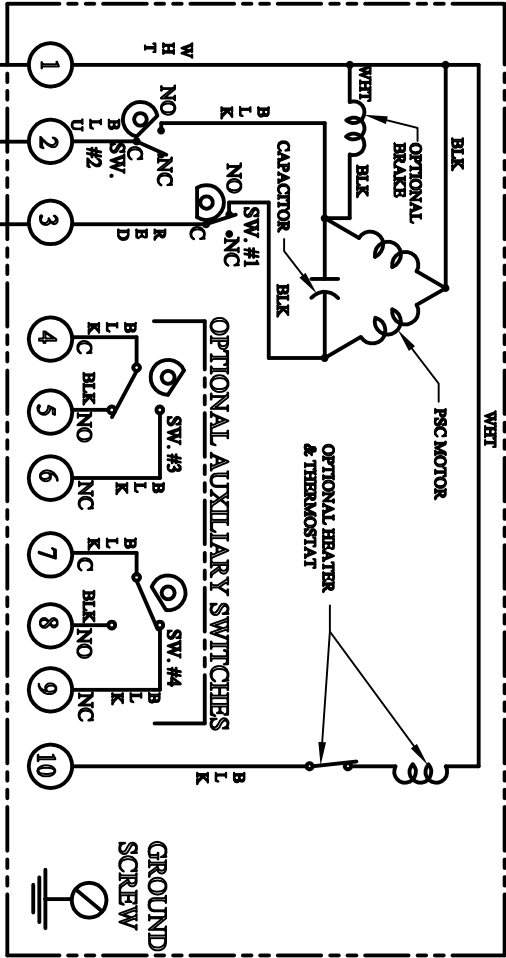
NO	DESCRIPTION	DATE	BY

	SW. #4 OPEN AUXILIARY
	SW. #3 CLOSE AUXILIARY
	SW. #2 OPEN LIMIT
	SW. #1 CLOSE LIMIT

SWITCH LAYOUT

NOTES:  
POWER TO TERMINALS 1 & 2 OPENS THE VALVE (CCW ROTATION)  
POWER TO TERMINALS 1 & 3 CLOSES THE VALVE (CW ROTATION)  
TERMINALS 4 THROUGH 9 FOR AUXILIARY SWITCH CONNECTIONS

WIRING DIAGRAM ILLUSTRATES THE ACTUATOR IN THE OPEN POSITION



FIELD WIRING

DPDT CONTROL SWITCH SHOWN FOR ILLUSTRATION ONLY

SWITCH NO.	CONTACTS WIRING	OPEN	MID	CLOSE
1	NO			
2	NC			
3	NO			
4	NC			

AUXILIARY SWITCHES (SW.#3 & #4) MAY BE SET TO ANY DESIRED POSITION THROUGH OUT ACTUATOR TRAVEL.

WIRING DIAGRAM

115VAC ER ACT. 2-POS. W/2 AUXILIARY L.S.

 RICHARDS INDUSTRIES  
CINCINNATI, OHIO U.S.A.  
• VALVE GROUP •

	SIZE	MARK
	USED	ON

26-01276

REF.	SCALE	DATE
	DR. BY	DW
	CHK. BY	