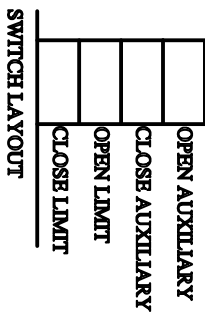


26-01285

NO	DESCRIPTION	DATE	BY



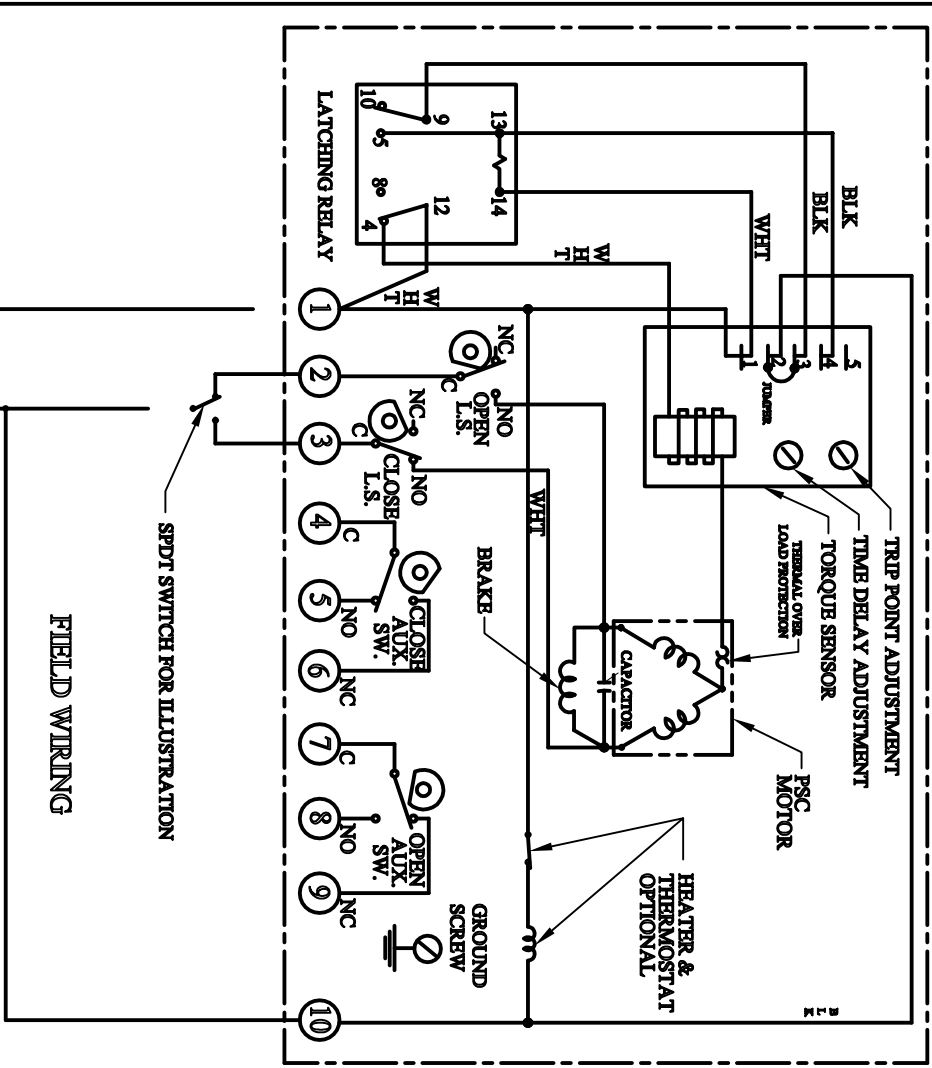
OPERATION:
ACTUATOR SHOWN IN THE OPEN POSITION.
ACTUATOR SHIPPED IN OPEN POSITION

TRIP POINT IS SET AT ACTUATORS RATED TORQUE. TIME DELAY IS SET TO AVOID TRIP DUE TO INRUSH CURRENT.

POWER TO TERMINALS #1 & #2 TO OPEN (CCW ROTATION), POWER TO TERMINALS #1 & #3 TO CLOSE (CW ROTATION).

UNDER NORMAL OPERATION THE TORQUE SENSOR HAS NO AFFECT ON THE OPERATION OF THE ACTUATOR. SHOULD THE ACTUATOR BECOME STALLED FOR ANY REASON WHAT SO EVER THE MOTOR CURRENT EXCEEDS THE TRIP POINT SETTING, THE TORQUE SENSOR ACTIVATES DE-ENERGIZING THE MOTOR, THE LATCHING RELAY DISCONNECTS THE MOTOR FROM THE POWER SUPPLY. THE UNIT WILL NOT START AGAIN UNTIL THE POWER IS SHUT OFF AND REAPPLIED OR THE ACTUATOR IS GIVEN A SIGNAL TO ROTATE IN THE REVERSE DIRECTION. THE ACTUATOR WILL NOT COMPLETE ITS CYCLE UNTIL THE CAUSE FOR EXCESSIVE CURRENT IS TAKEN CARE OF.

NOTE:
BRAKE, AUXILIARY SWITCHES, HEATER AND THERMOSTAT ARE OPTIONAL.



115/220 VAC ER50/140 ACT. WIRING DIAGRAM W/2 L.S. & HEATER/THERMOSTAT

REF.	SCALE	DATE
	-	10/14/05
	DR. BY	DW
	CHK. BY	

RICHARDS INDUSTRIES
CINCINNATI, OHIO
U.S.A.
• VALVE GROUP •

SIZE	MARK

USED ON

26-01285