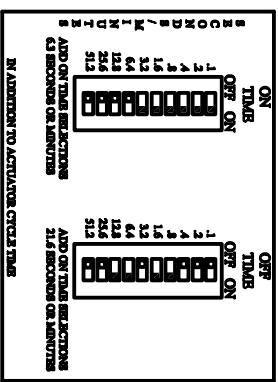
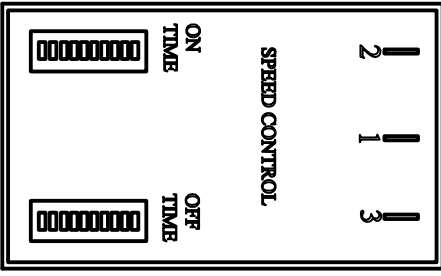
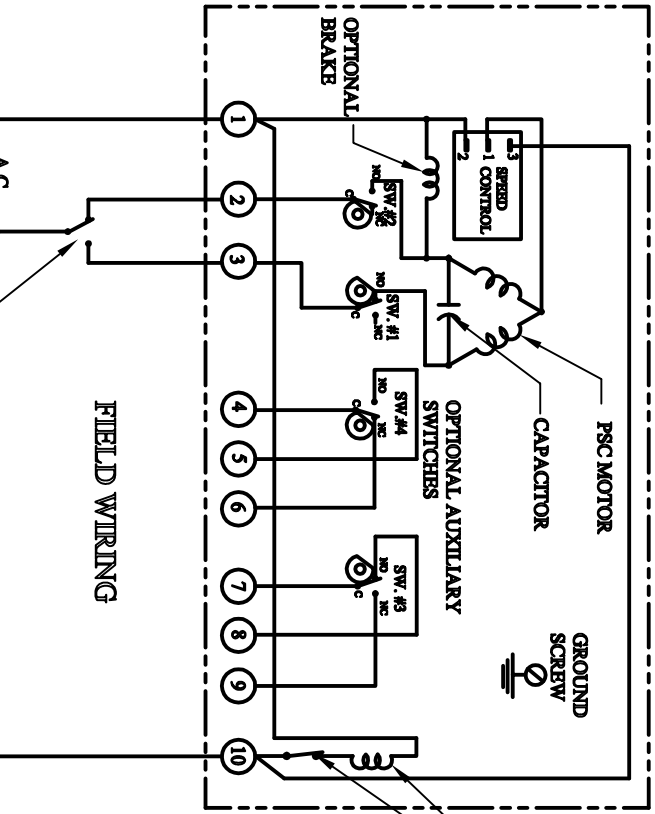


26-01279

NO	DESCRIPTION	DATE	BY

OPERATION: UPON APPLICATION OF POWER TO TERMINALS #1 AND #2 THE SPEED CONTROL PULSES POWER TO THE ACTUATOR MOTOR AS DETERMINED BY THE SELECTION OF THE ON AND OFF TIME. AT THE END OF TRAVEL THE LIMIT SWITCH TURNS OFF POWER TO THE MOTOR. UPON APPLICATION OF POWER TO TERMINALS #1 AND #3 THE SPEED CONTROL AGAIN PULSES POWER TO THE MOTOR UNTIL THE LIMIT SWITCH CUTS OFF THE POWER TO THE MOTOR.



AVAILABLE SPEED OPTIONS:

MODEL	TIMING
SCBN11	ON 0.1 TO 102.3 SEC., OFF 0.1 TO 102.3 SEC
SCBN12	ON 0.1 TO 102.3 SEC., OFF 0.1 TO 102.3 MIN
SCBN21	ON 0.1 TO 102.3 MIN., OFF 0.1 TO 102.3 SEC
SCBN22	ON 0.1 TO 102.3 MIN., OFF 0.1 TO 102.3 MIN

SWITCH LAYOUT

SW. #4 OPEN LIMIT	
SW. #3 CLOSE LIMIT	
SW. #2 OPEN LIMIT	
SW. #1 CLOSE LIMIT	

SIZE	
MARK	
USED ON	

NOTES:
 POWER TO TERMINALS #1 & #2 OPENS THE VALVE (CCW ROTATION).
 POWER TO TERMINALS #1 & #3 CLOSES THE VALVE (CW ROTATION).
 TERMINALS #4 THRU #6 FOR OPEN AUXILIARY SWITCH.
 TERMINALS #7 THRU #9 FOR CLOSE AUXILIARY SWITCH.
 HOT TO TERMINAL 10 POWERS SPEED CONTROL.

WIRING DIAGRAM
 115VAC ER ACT. 2-POS.
 W/SPEED CONTROL & COMMON OPTIONS

REF.	SCALE	DATE
		09/08/05
	DR. BY	DW
	CHK. BY	

RICHARDS INDUSTRIES
 CINCINNATI, OHIO U.S.A.
 VALVE GROUP

26-01279