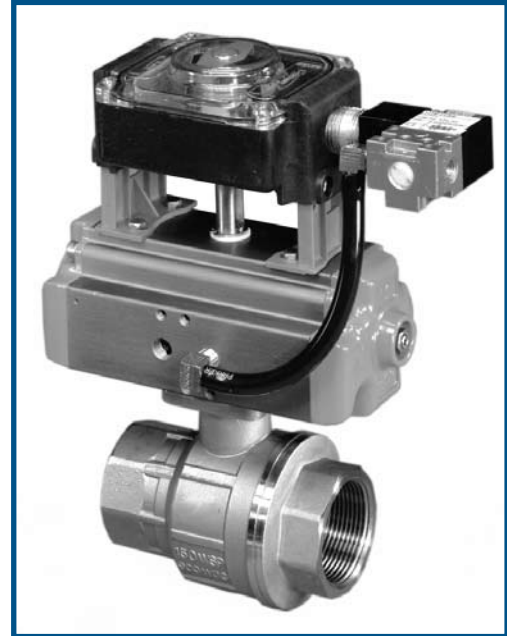


# CR Series

## Low Cost Limit Switches

The CR Series Limit Switch provides a compact design and the most economical solution for both visual and remote electrical indication of rotary valve/actuator position.

- Resin housing designed for NEMA 4, 4X environments
- Integral NAMUR (DVI/DVE 3845) mounting legs and drive shaft maximizes interchangeability plus reduces cost by eliminating need for bracket and coupler
- Compact design – ideal for all size actuators with NAMUR (DVI/DVE 3845) limit switch interface
- Visible confirmation of valve/actuator position
- Multiple switch options
- Switches are factory wired to printed circuit boards (PCB) to simplify installation and maintenance. Each PCB terminal strip includes two spare terminals to accommodate an optional solenoid valve
- “Easy-set” cams are splined and independently adjustable



### CR Series Options

- Mechanical switches offer the most economical choice for general purpose applications
- Gold plated mechanical switch contacts significantly enhance performance on low current (<50MA applications)
- Inductive proximity switches are ideal for low current and intrinsically safe applications

### CR Series Ordering Schematic

Series	Switch Type and Rating	Switch Quantity	Terminal Strip	Indicator
CR	01	2	H	—

Series	
CR	Limit Switch

Switch Quantity	
2	Two Switches

Switch Type and Rating (see note)		
01	Mechanical SPDT	5 amp@250 VAC 0.6 amp@125 VDC
03	Mechanical SPDT (gold plated contacts)	3 amp@125/250 VAC
70	Proximity V3 P & F MJ2-V3-N	NAMUR, 2-wired not amplified, EEX IA IIC
71	Proximity V3 P & F NBB2-V3-US	2-wire, 5 to 200 mA
73	Proximity V3 P & F NBB2-V3-E2	20 to 140 volts (AC or DC) PCP, 6 to 60 VDC, 3-wire amplified

Terminal Strip	
H	Standard Circuit Board Strip (6 poles)

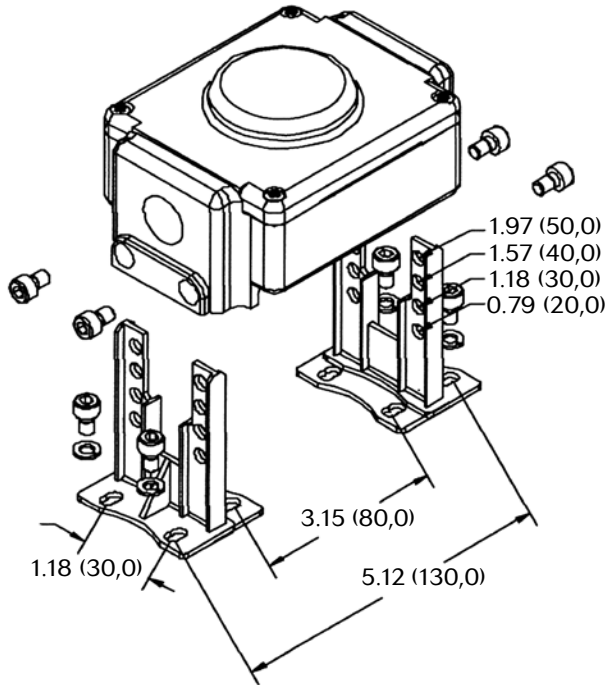
Indicator	
—	2 Way
L	3 Way L Port
T	3 Way T Port

Note: The recommended minimum load for switch 01 is 50 mA. All other switch types are suitable for applications as low as 1 mA.



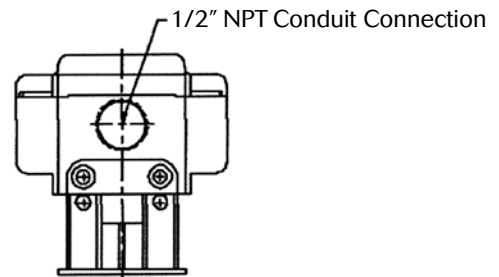
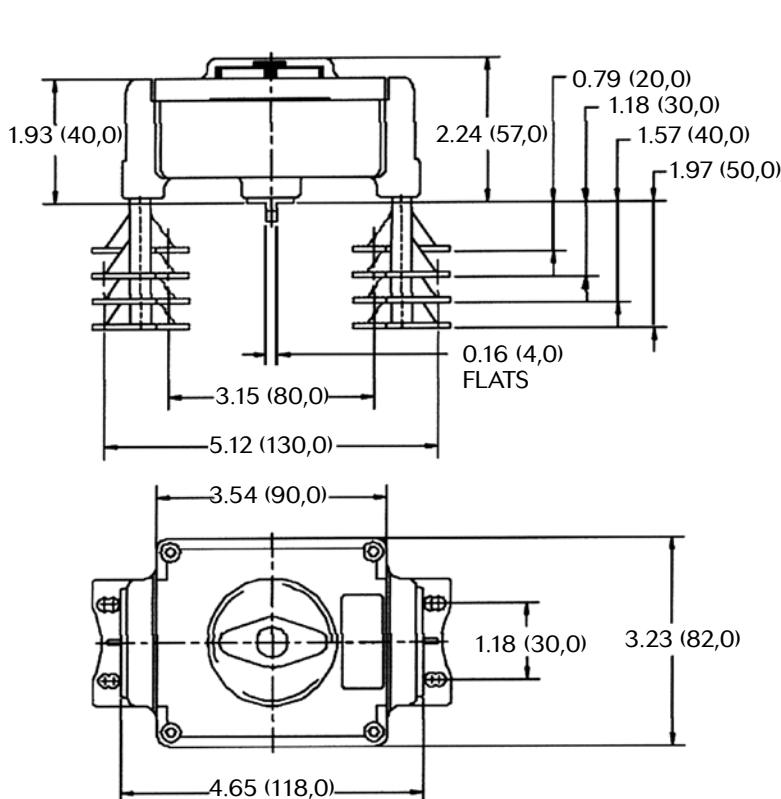
Marwin Valve, a division of Richards Industries  
 3170 Wasson Road • Cincinnati, OH 45209  
 513.533.7340 • 800.628.2583 • 513.533.7343 (f)  
 marwin@richardsind.com • www.marwinvalve.com

## CR Series Ordering Schematic

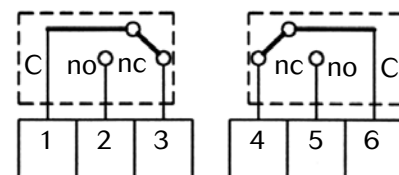


Materials Specifications	
Description	Specification
Housing	Reinforced Noryl
NAMUR Mounting Legs	Reinforced Noryl
Shaft	Stainless Steel
Cam/Splines	UV Resistant Polycarbonate
Housing Cover	UV Resistant Polycarbonate
Terminal Blocks	SS Screws & PVC Housing
Internal Brackets	Polycarbonate
Fasteners	Stainless Steel
Temperature Range	14° to 176° F (-10° to +80°C)
Weight	0.5 lb (0,2 kg)
Approvals	IP65 waterproof

## CR Series Dimensions



## CR012H Wiring Diagram



ART0850