



MARWIN VALVE

3170 Wasson Road • Cincinnati, OH 45209 USA
Phone 513-533-5600 • Fax 513-871-0105
marwin@richardsind.com • www.marwinvalve.com

I & M 5000 & 6000 Series (Sizes with Uni-Body Construction)

*Installation & Maintenance Instructions for
Marwin 5000 & 6000 Series Flanged Ball Valves
1/2" - 1" 5000F & 6000F, 1/2" - 10" 5000R & 6000R*

Warning: Marwin Valve Ball Valves must only be used, installed and repaired in accordance with these Installation & Maintenance Instructions. Observe all applicable public and company codes and regulations. In the event of leakage or other malfunction, call a qualified service person; continued operation may cause system failure or a general hazard.

Please read these instructions carefully!

Your Marwin Valve product will provide you with long, trouble-free service if it is correctly installed and maintained. Spending a few minutes now reading these instructions can save hours of trouble and downtime later. When making repairs, use only genuine Marwin Valve parts, available for immediate shipment from the factory.

3. Wear protective equipment and take appropriate precautions to safeguard against injury caused by the discharge of trapped fluids.
4. Use only Marwin recommended spare parts for maintenance.
5. To ensure safety and maintain warranty, never modify valve in any way without prior approval from Marwin.

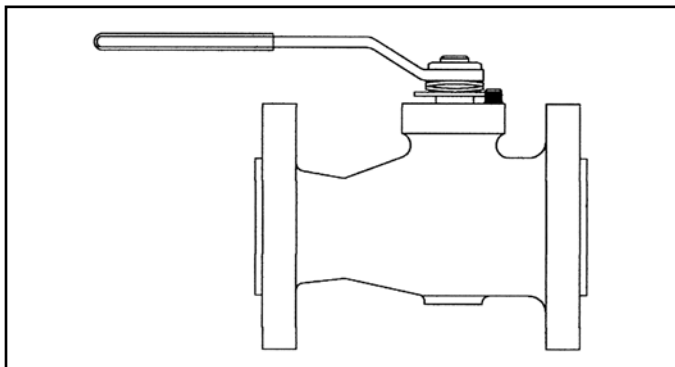
Scope

This manual is intended as a guide to assist customers in the storage, installation, and maintenance of Marwin 5000 & 6000 Series Ball Valves (sizes with uni-body construction). Subsequent additions or special instructions will be provided for special ball valves, critical service, or customer requirements.

Storage

A pure Vaseline oil (silicone free) is used as lubrication on all internal surfaces. This may be removed with a solvent if found objectionable. All valves are adequately packed in a strong cardboard case in such a way as to avoid any possible damage during transport and storage.

Applicability



This manual is applicable to the following Marwin ball valves: 1/2"-1" 5000F, 1/2"-10" 5000R, 1/2"-1" 6000F, 1/2"-10" 6000R.

CAUTION: If ball valves are not destined for immediate use, the following precautions should be taken:

1. If possible, leave the ball valves in their packing cases during the period of storage.
2. Ball valves must remain in open position during this time.
3. In order to prevent damage, protective plastic covers on valve ends should not be removed until immediately prior to installation.
4. It is advisable to store the valves in waterproof conditions. Ball valves should be protected to safeguard against humidity, moisture, dust, dirt, sand, mud, salt spray, and seawater.
5. All valves complete with actuators are to be stored in dry conditions.
6. Valves to be stored for a long period of time should be checked by the quality control personnel every six months; every three months when valves are automated.

Caution

1. Valve pressure ratings are based on many variables, including valve series and size, as well as body, seat and bolt material. Verify that application does not exceed the pressure or temperature rating on the nameplate.
2. **ALWAYS** depressurize the line with the valve in the **OPEN** position before disassembly.

Maintenance During Storage Period

- Internal surface should be inspected to check for dust or other foreign objects.
- Rust or dust must be removed by cleaning with proper solvent.

- After cleaning, ball valves must be lubricated with an adequate lubricant.
- Ball valves should be operated for at least two complete cycles before installing or returning to storage.

Installation

The ball valves may be installed in any position using standard pipe fitting practice.

CAUTION: Before installation of the valve:

1. Pipe must be free of tension both during and after installation.
2. Pipe must be flushed to clean dirt, welding residues, etc. which would damage ball or seats.
3. The valve should be kept in OPEN POSITION during installation and protective plastic covers must be removed only at the moment of installation.
4. Before shipment, the ball is lubricated with a pure Vaseline oil. This can be easily removed with an application compatible solvent if required.
5. If the valve was specified to be tested per ANSI B16.34, there may be some trapped water between the ball and the body cavity. This can be removed by partially opening the valve, thereby exposing the cavity to the through port of the ball.
6. Special care should always be taken when installing automated ball valves that the ball is in the proper position.

Installation of Flanged Ends

1. Verify valve is in the full open position.
2. Use the appropriate size bolt and heavy hex nut (not included) as recommended for flange size and class.
3. Flange connection requires gasket (not included).
4. Follow gasket manufacturer's recommended practice for tightening flange bolts.

Manual Operation

1. Open and close the valve by turning the handle ¼ turn (90°).
2. Valve is in open position when handle is in line with the pipe.
3. Valve is in closed position when the handle is perpendicular to the pipe.

Maintenance

Before starting maintenance, please read information contained in the **Caution Section** of the manual.

1. Open and close the ball valve at least once to release the pressure completely from valve body.
2. Ball valves, if correctly used, normally do not need any internal lubrication and maintenance. However, when necessary, ball or seats can be replaced by qualified personnel following the instructions of this manual.
3. For further information, please refer to SPARE PARTS LIST Section.

Valve Disassembly

A. To Inspect and / or Replace Body Seals, Seats, Packing & Ball

Reference exploded view for part identification.

1. Valve must be in the open position.
2. Remove valve from line.
3. Remove end plug (2) from body (1).
4. Close the valve and remove ball (3), seats (7), and body seal (10). Be careful not to damage the ball.
5. Remove the handle nut (13), handle (12), stem nut (11), stop plate (16), spring washers (6), gland (5), thrust washer (8), and packing (9).
6. Push the stem (4) into the body (1). Remove thrust washer (8) from stem.

B. Inspection and Replacement

With the valve completely disassembled, clean and examine all components:

1. Ball: The surface of the ball should be free from any defect. If any are found, the ball should be replaced. Using a defective ball will be extremely detrimental to valve performance.
2. Seats: Replacement of seats is recommended.
3. Stem seals and body seals: Should be discarded and replaced.
4. Remaining components of the valves: After cleaning, carefully examine for wear, corrosion, and mechanical damage. Replace all defective parts.
5. Clean inside of body and stem housing. Light grease, compatible with line fluid, can be used on ball, seals and stem surfaces.

NOTE: A spare parts list is available for this valve. Please refer to section view on the next page for identification. Please specify specific valve number to ensure proper parts are ordered. Marwin Valve does not take responsibility for incorrectly ordered spare parts.

Re-Assembly

A. Stem

1. Replace thrust washer (8) then insert the stem (4) from inside of body.
2. Install stem packing (9), thrust washer (8), gland (5), spring washers (6), stop plate (16), and stem nut (11) and tighten until snug, then $\frac{1}{2}$ turn. The handle may be used to prevent rotation of the stem while tightening the stem nut.
3. Install handle (12) and handle nut (13) then tighten.

B. Ball, Seats and Seals

1. Install seat (7) in body (1).
2. Place the stem in closed position and insert the ball (3), aligning groove in ball with bottom of stem.
3. Position the ball in the open position.
4. Install the seat (7) and body seal (10) on end plug (2).
5. Insert and tighten end plug until valve operates at specified torque.

Testing

1. After completing the reassembly, check that the valve operates smoothly by opening and closing valve several times.
2. If entire valve was removed from line and if facilities are available, test the ball valve to appropriate specifications.

Troubleshooting

Stem Leakage

- Stem leakage in the stem packing area may be eliminated by increasing the torque on the stem nut (11) in $\frac{1}{4}$ turn increments. If leakage persists, replace stem packing (9).

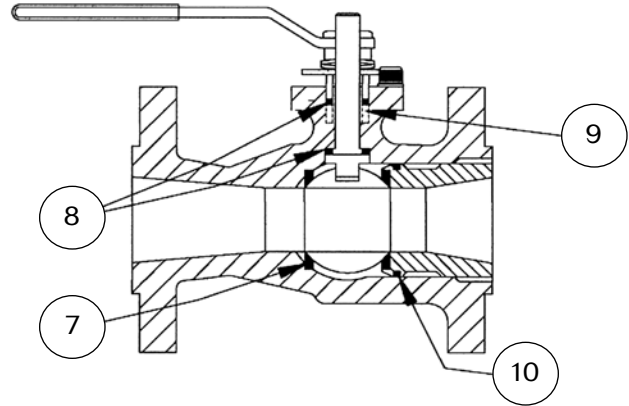
Body Seal Leakage

- Replace body seal o-ring (10).

In Line or Seats Leakage

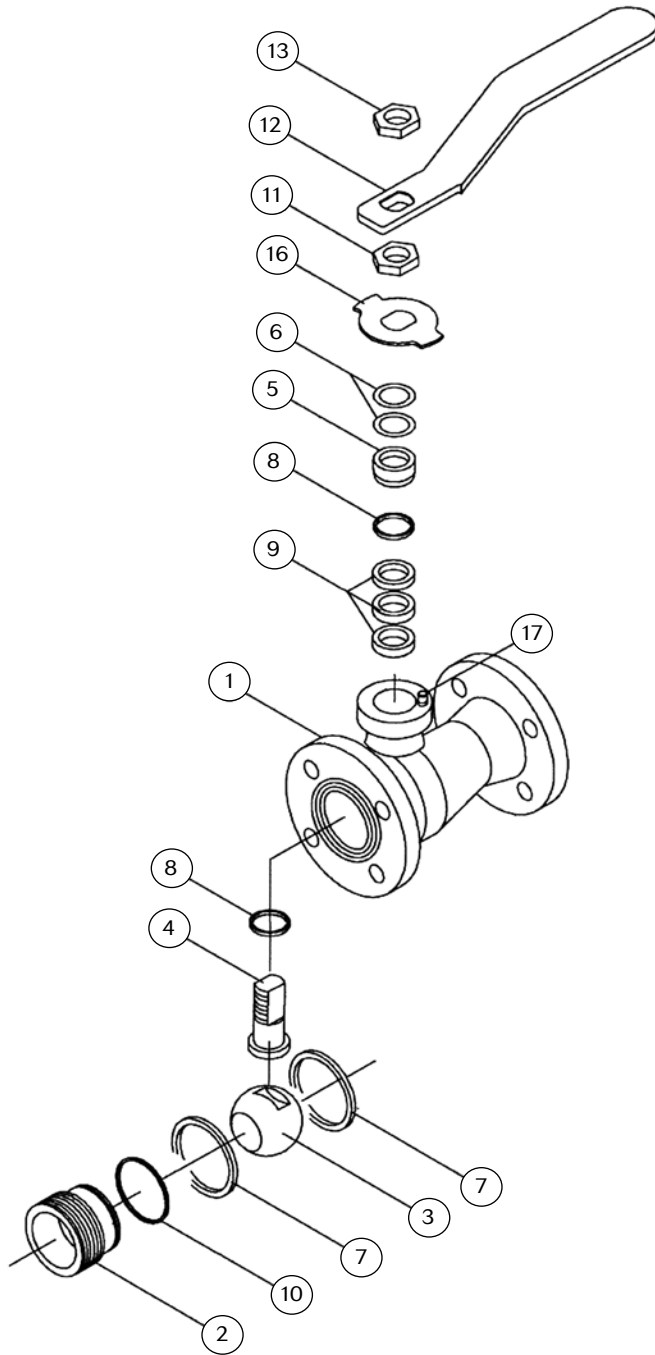
- Check to be sure valve is in fully closed position. If leakage persists, the valve must be disassembled and damaged parts replaced.

Spare Parts Kit



Item	Quantity	Description
7	2	Seats
8	2	Thrust Washer
9	1	Packing
10	1	Body Seal

Exploded View



Item	Description
1	Body
2	End Plug
3	Ball
4	Stem
5	Gland
6	Belleville Washer
7	Seats
8	Thrust Washer
9	Packing
10	Body Seal (O-Ring)
11	Stem Nut
12	Handle
13	Handle Nut
16	Stop Plate
17	Handle Stop