

3T3700/3L3800 Series

Three Way Stainless Steel Ball Valves

The 3T3700 and 3L3800 are four seated valves which allow product to be mixed, diverted, or shutoff with a three way valve.

- Four seat rings for optimal flow control during modulation
- Each passageway is machined to reduce flow resistance
- The "L" port is operated as a simple diverting valve
- The "T" port configuration is versatile and offers more flow options for piping configurations
- Available in sizes 1/4" through 2" standard port
- ISO 5211 mounting pad, ideal for actuator or accessory mounting
- Square stem for precise coupling positioning



3T3700/3L3800 Series Ordering Schematic

1	2	—	3	4	5	6	7	8	—	9
3	T	—	37	00	R	T	T	S	—	100
3	L	—	38	00	R	T	T	S	—	100

1	Body Port, Configuration
3	3-Way

2	Ball Port, Configuration
T	"T" Port
L	"L" Port

3	Series
37	3700
38	3800

4	Ball & Stem
00	Stainless Steel

5	Port Design
R	Standard Port

6	Stem Packing
T	PTFE

7	Seat
T	PTFE

8	End Connections
S	FNPT

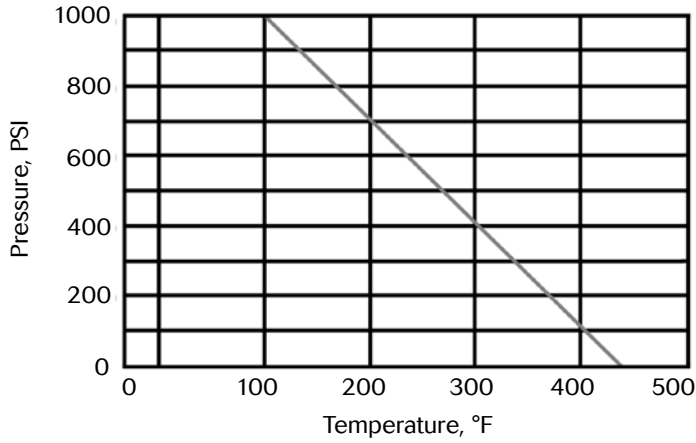
9	Size
025	1/4"
038	3/8"
050	1/2"
075	3/4"
100	1"
125	1-1/4"
150	1-1/2"
200	2"



Marwin Valve, a division of Richards Industries
 3170 Wasson Road • Cincinnati, OH 45209
 513.533.7340 • 800.628.2583 • 513.533.7343 (f)
 marwin@richardsind.com • www.marwinvalve.com

Marwin Valve 3T3700/3L3800 Series – Engineering Data

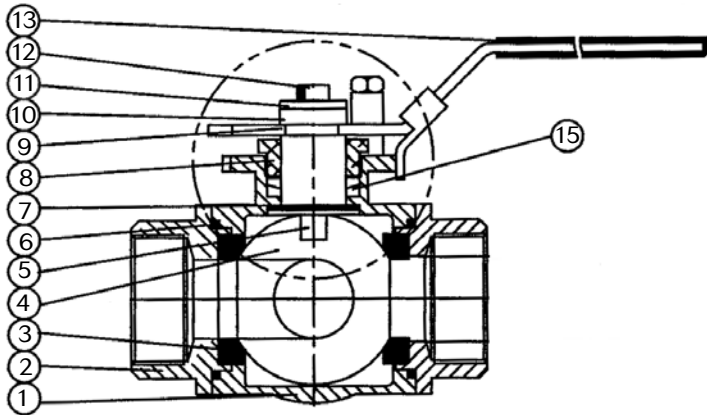
Pressure – Temperature Chart



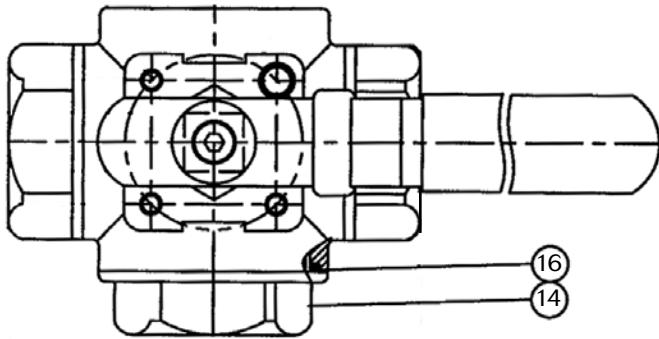
Technical Specifications

Size	Torque (in-lbs)	Weight lbs (kgs)	Cv "L" (Kv)	CV "T" (Kv)
1/4"	100	1.5 (0,7)	5.6 (4,8)	7.0 (6,0)
3/8"	100	1.5 (0,7)	5.6 (4,8)	7.0 (6,0)
1/2"	100	1.5 (0,7)	6.0 (5,2)	13.0 (11,2)
3/4"	150	2.5 (1,1)	8.0 (6,9)	29.0 (25,0)
1"	300	4.0 (1,8)	11.0 (9,5)	49.0 (42,2)
1-1/4"	385	5.0 (2,3)	32.0 (27,6)	72 (62)
1-1/2"	450	7.5 (3,4)	65 (56)	110 (95)
2"	580	15.0 (6,8)	112 (97)	213 (184)

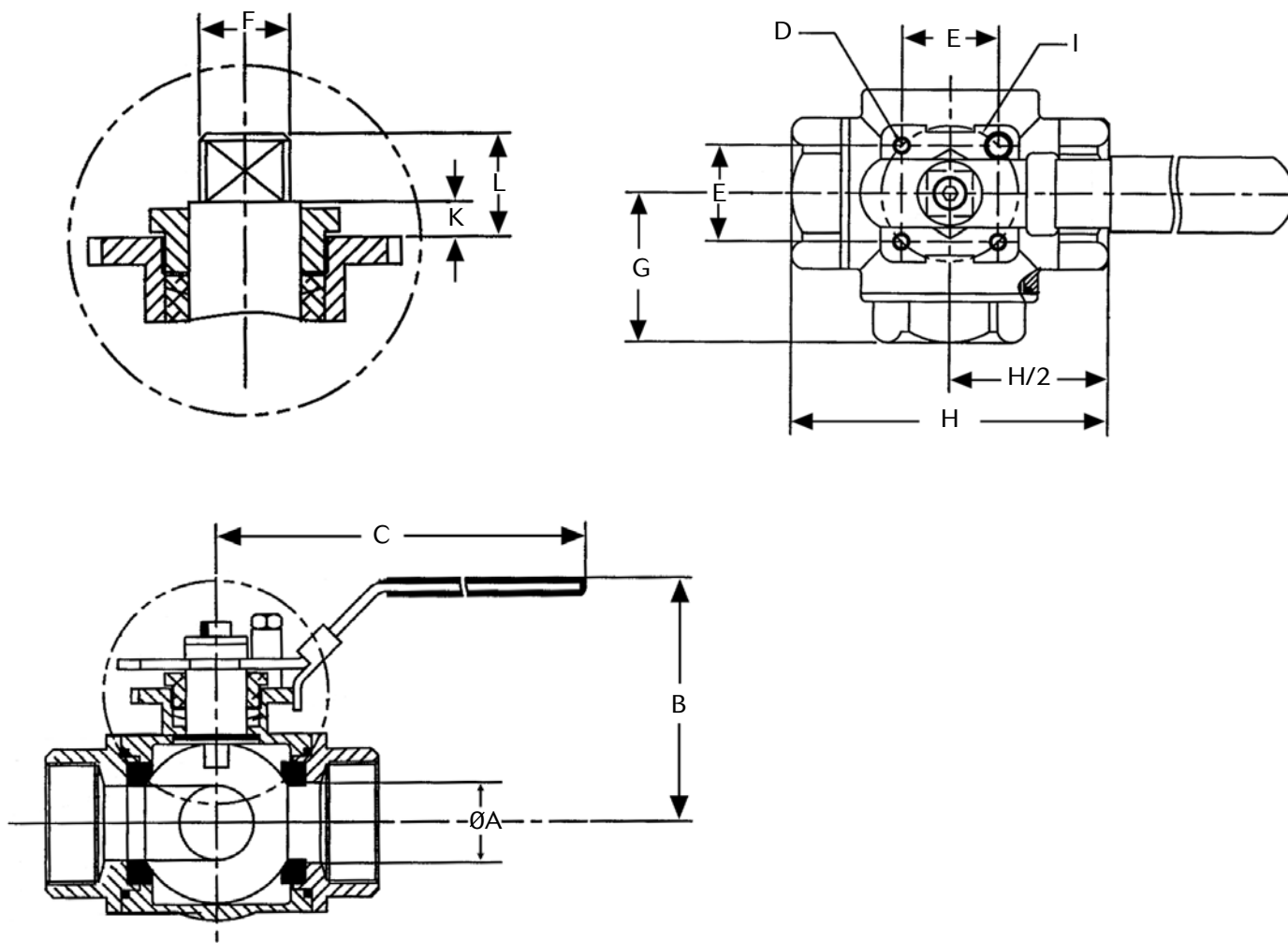
Bill of Materials



Part No.	Part Name	Material	Specification
1	Body	316 Stainless Steel	ASTM A351 CF8M
2	End Cap	316 Stainless Steel	ASTM A351 CF8M
3	Seat	PTFE	PTFE
4	Ball	316 Stainless Steel	ASTM A351 CF8M
5	Stem	316 Stainless Steel	ASTM A351 CF8M
6	Body Seal	RPTFE	RPTFE
7	Thrust Washer	PTFE	PTFE
8	Gland	304 Stainless Steel	AISI 304
9	Handle	304 Stainless Steel	AISI 304
10	Handle Washer	304 Stainless Steel	AISI 304
11	Washer	304 Stainless Steel	AISI 304
12	Handle Nut	304 Stainless Steel	AISI 304
13	Handle Cover	Vinyl	Commercial
14	End Cap	316 Stainless Steel	ASTM A351 CF8M
15	Stem Packing	PTFE	PTFE
16	Body Seal	RPTFE	RPTFE



Marwin Valve 3T3700/3L3800 Series – Dimensions



Size	ØA	B	C	D	E	F	G	H	I	K	L	ISO 5211
1/4" DN8	0.43 (10,9)	2.28 (57,9)	4.17 (106,0)	M5x0.8	1.17 (29,7)	0.35 (8,9)	1.34 (34,0)	2.68 (68,1)	1.65 (41,9)	0.24 (6,1)	0.43 (10,9)	F04
3/8" DN10	0.43 (10,9)	2.28 (57,9)	4.17 (106,0)	M5x0.8	1.17 (29,7)	0.35 (8,9)	1.34 (34,0)	2.68 (68,1)	1.65 (41,9)	0.24 (6,1)	0.43 (10,9)	F04
1/2" DN15	0.50 (12,7)	2.40 (61,1)	5.43 (137,9)	M5x0.8	1.17 (29,7)	0.35 (8,9)	1.48 (37,6)	2.95 (74,9)	1.65 (41,9)	0.24 (6,1)	0.43 (10,9)	F04
3/4" DN20	0.63 (16,0)	2.91 (73,9)	5.43 (137,9)	M6x1	1.39 (35,3)	0.43 (10,9)	1.69 (42,9)	3.39 (86,1)	1.97 (50,0)	0.24 (6,1)	0.51 (13,0)	F05
1" DN25	0.79 (20,1)	3.19 (81,0)	6.38 (162,1)	M6x1	1.39 (35,3)	0.43 (10,9)	2.15 (54,6)	4.06 (103,1)	1.97 (50,0)	0.30 (7,6)	0.75 (19,1)	F05
1-1/4" DN32	0.98 (24,9)	3.46 (87,9)	6.38 (162,1)	M6x1	1.39 (35,3)	0.43 (10,9)	2.26 (57,4)	4.53 (115,1)	1.97 (50,0)	0.30 (7,6)	0.75 (19,1)	F05
1-1/2" DN40	1.26 (32,0)	4.09 (103,9)	8.66 (220,0)	M8x1.25	1.95 (49,5)	0.43 (10,9)	2.46 (62,5)	4.92 (125,0)	2.76 (70,1)	0.33 (8,4)	0.93 (23,6)	F07
2" DN50	1.50 (38,1)	4.33 (110,0)	8.66 (220,0)	M8x1.25	1.95 (49,5)	0.55 (14,0)	2.87 (72,9)	5.75 (146,1)	2.76 (70,1)	0.33 (8,4)	0.96 (24,4)	F07

Port Arrangement

Three Way "T" Port

Position Flow Pattern	A	B	C
T1 180°			
T2 180°			
* T3 90°			
T4 90°			

* Standard port arrangement

Port Arrangement

Three Way "L" Port

Position Flow Pattern	A	B	C
L1 180°			
* L2 90°			
L3 180°			
L4 180°			
L5 90°			
L6 180°			

* Standard port arrangement