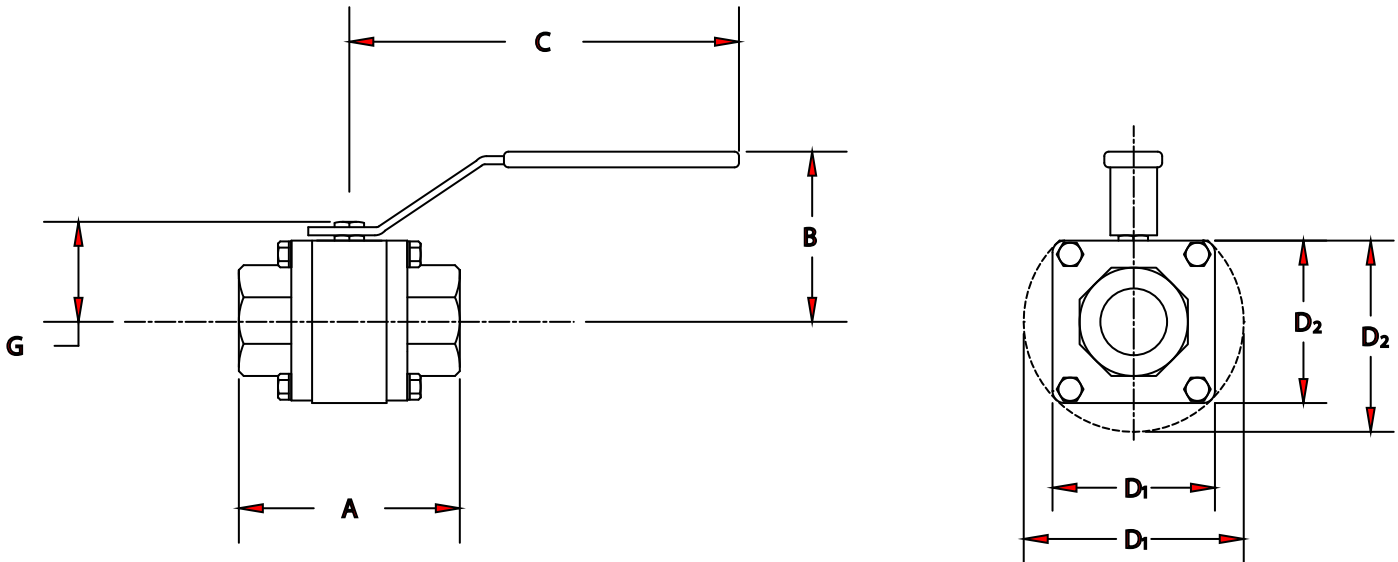


-	ADDED D DIM'S	12/24/08	JLM
-	REVISED A DIM'S	10/6/10	DW



SIZE		DIMENSIONS IN INCHES						WT.
FULL	RED.	A	B	C	D <sub>1</sub>	D <sub>2</sub>	G	(LBS.)
1/4"	-	2.91	2.64	5.98	2.00 SQ.	2.00 SQ.	1.42	2.4
3/8"	1/2"	2.91	2.64	5.98	2.00 SQ.	2.00 SQ.	1.42	2.2
1/2"	3/4"	3.17	2.76	5.98	2.10 SQ.	2.10 SQ.	1.50	2.8
3/4"	1"	3.87	3.15	7.60	2.60 SQ.	2.60 SQ.	2.05	5.0
1"	1 1/4"	4.36	3.62	7.60	2.90 SQ.	2.90 SQ.	2.28	7.0
1 1/4"	1 1/2"	4.86	4.25	8.86	3.36 SQ.	3.36 SQ.	2.71	9.5
1 1/2"	2"	5.50	4.45	8.86	3.66 SQ.	3.66 SQ.	2.94	12.8
2"	2-1/2"	5.59	4.65	8.86	Ø5.25	4.96	3.31	22.0
2 1/2"	3"	8.98	5.35	13.80	Ø5.90	5.75	4.01	29.7
3"	4"	8.78	5.91	19.7	Ø7.38	7.17	4.92	38.5

TOL. UNLESS OTHERWISE NOTED (IN.) \_\_\_\_\_

VA. END-TO-END LENGTH: ± 1/16"  
 OTHER VA. DIM.: ≤NPS 2", ± 1/8";  
 NPS 2 1/2"-4", ± 1/4"; >4", ± 1/2"  
 VA.-ACT. ASSY & PIPING DIM.: ± 1/2"

CUSTOMER ORDER # \_\_\_\_\_  
 CUSTOMER \_\_\_\_\_  
 TAG No. \_\_\_\_\_  
 SIZE & MODEL # 1/4"-3" FULL PORT AND  
 1/2"-4" RED. PORT 3000 SERIES W/NPT&FSW  
 CERTIFIED \_\_\_\_\_ DATE \_\_\_\_\_

**MARWINVALVE**  
 a division of Richards Industries  
 CINCINNATI, OHIO U.S.A  
 www.marwinvalve.com

DR. BY	JLW	12/03/01	MD03029
CHK.BY			