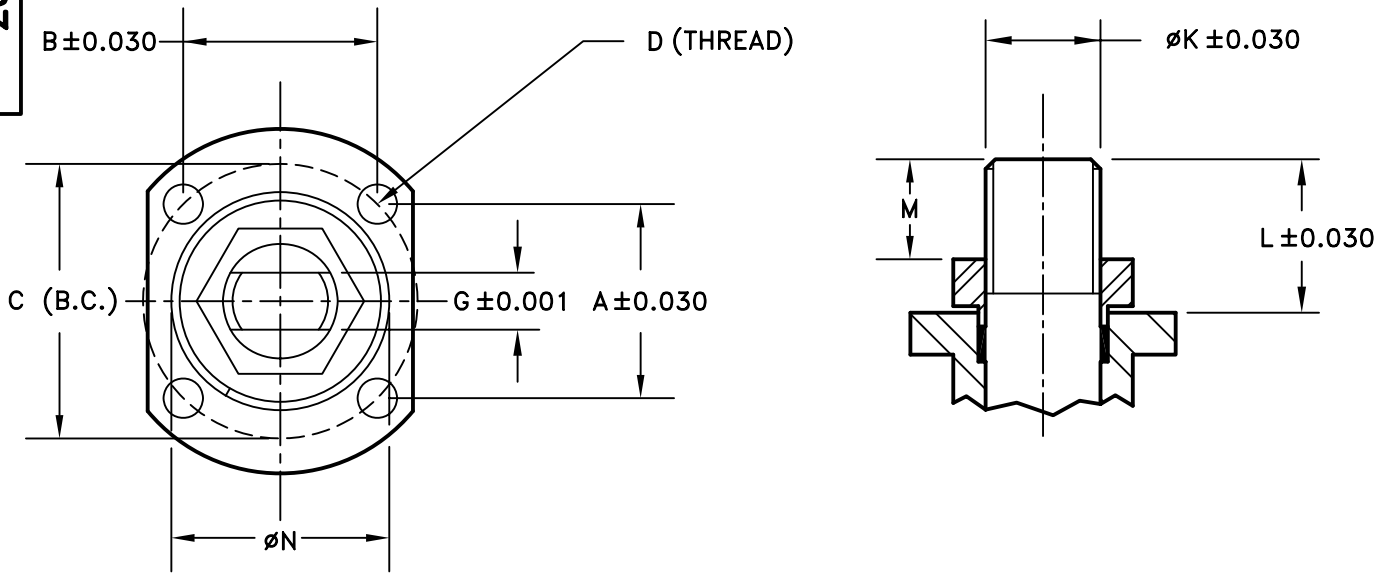


28-20801

# TOP MOUNTING DIMENSIONS FOR MODEL NO. 1/2"-4" 2223/2333F (ED)

NO	DESCRIPTION	DATE	BY



- A, B & C (B.C.) = MOUNTING PAD SPACING
- D = THREAD OF MOUNTING HOLES
- G = ACROSS FLAT ON STEM
- K = STEM DIAMETER
- L = DISTANCE TO TOP OF STEM FROM MOUNTING PAD
- M = DISTANCE TO TOP OF STEM FROM TOP OF NUT (STOP PLATE)
- N = HUB O.D.

VALVE SIZE	DIMENSIONS (INCHES)									
	A	B	C (B.C.)	D (THREAD)	MTG PATTERN	G	øK	L	M	øN
1/2"	1.168	1.168	ø1.65	10-24 (M5)	F04	0.248	0.38	0.78	0.50	1.19
3/4"	1.168	1.168	ø1.65	10-24 (M5)	F04	0.248	0.38	0.71	0.41	1.19
1"	1.392	1.392	ø1.97	1/4-20 (M6)	F05	0.315	0.44	0.88	0.50	1.38
1 1/2"	1.952	1.952	ø2.76	5/16-18(M8)	F07	0.374	0.63	1.14	0.70	2.17
2"	1.952	1.952	ø2.76	5/16-18(M8)	F07	0.374	0.63	1.14	0.75	2.17
2 1/2"	1.952	1.952	ø2.76	5/16-18(M8)	F07	0.669	0.87	1.67	0.85	2.17
3"	2.842	2.842	ø4.02	3/8-16(M10)	F10	0.669	1.115	1.85	1.15	2.74
4"	2.842	2.842	ø4.02	3/8-16(M10)	F10	0.669	1.115	1.89	1.20	2.74



**MARWIN**  
Ball Valves

RICHARDS INDUSTRIES  
3170 Wasson Rd.  
Cincinnati, Ohio 45209  
Telephone (513) 533-5600  
Fax (513) 533-7343

DR. BY	DW	03/15/05
CHK. BY		

28-20801