

NO	DESCRIPTION	DATE	BY
-	ADDED NOTE 1	05/09/06	DW

TOP MOUNTING DIMENSIONS FOR MODEL NO. .25"F-4"R 3000 & 7000

28-03800

FIG. 1: 1"F-4"R

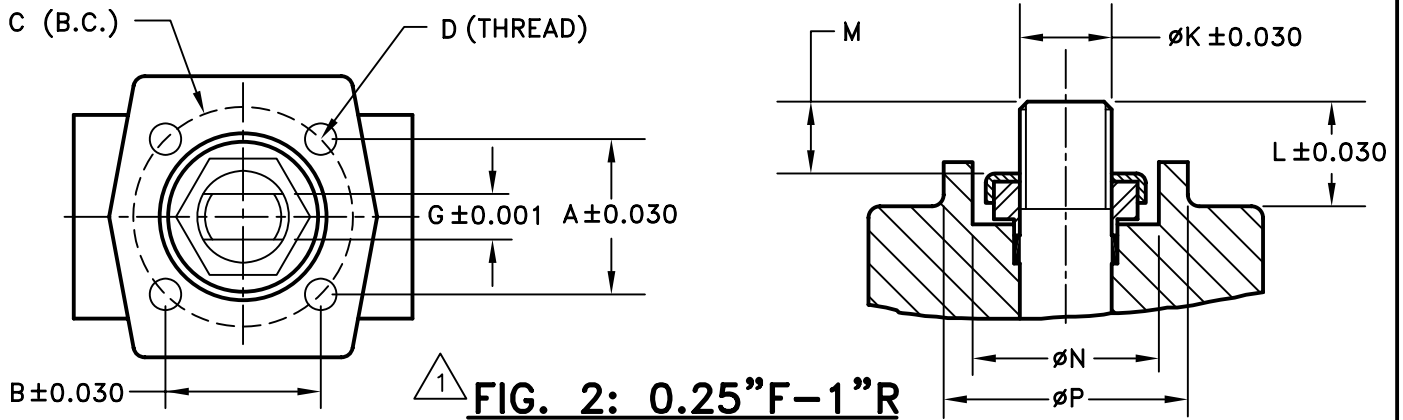
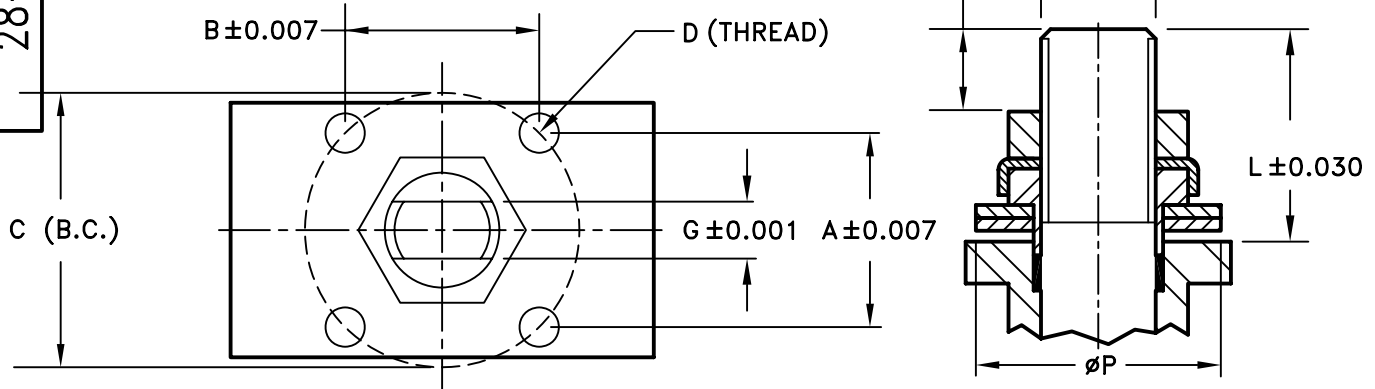


FIG. 2: 0.25"F-1"R

VALVE SIZE	DIMENSIONS (INCHES)										
	A	B	C	D (THREAD)	MTG	G	ØK	L	M	ØN	ØP
.25F, .38F, .5R	1.002	1.002	Ø1.42	10-24UNC	F03	0.214	0.391	0.21	0.27	0.830	1.000
.5F, .75R	1.002	1.002	Ø1.42	10-24UNC	F03	0.214	0.391	0.28	0.27	0.840	1.000
.75F, 1.0R	1.169	1.169	Ø1.65	10-24UNC	F04	0.294	0.467	0.46	0.40	0.980	1.180
1.0F, 1.25R	1.169	1.169	Ø1.65	10-24UNC	F04	0.294	0.467	0.87	0.45	-	0.844
1.25F, 1.5R, 1.5F, 2.0R	1.392	1.392	Ø1.97	1/4-20 UNC	F05	0.351	0.587	1.10	0.54	-	0.979
2.0F, 2.5R (1)	1.392	1.392	Ø1.97	1/4-20 UNC	F05	0.351	0.587	1.00	0.54	-	0.979
2.0F-EN, 2.5R-EN (2)	1.392	1.392	Ø1.97	1/4-20 UNC	F05	0.540	0.701	1.00	0.50	-	1.400
2.5F, 3.0R	1.949	1.949	Ø2.76	5/16-18 UNC	F07	0.628	0.865	1.24	0.65	-	1.744
3.0F, 4.0R	1.949	1.949	Ø2.76	5/16-18 UNC	F07	0.701	0.943	1.45	0.55	-	1.962

(1) BEFORE 06/04.

(2) AFTER 06/04.

NOTE:

△ USED FOR CS & SST BODIES ONLY.



MARWIN
Ball Valves

RICHARDS INDUSTRIES
3170 Wasson Rd.
Cincinnati, Ohio 45209
Telephone (513) 533-5600
Fax (513) 533-7343

DR. BY	DW	03/23/05
CHK. BY		

28-03800