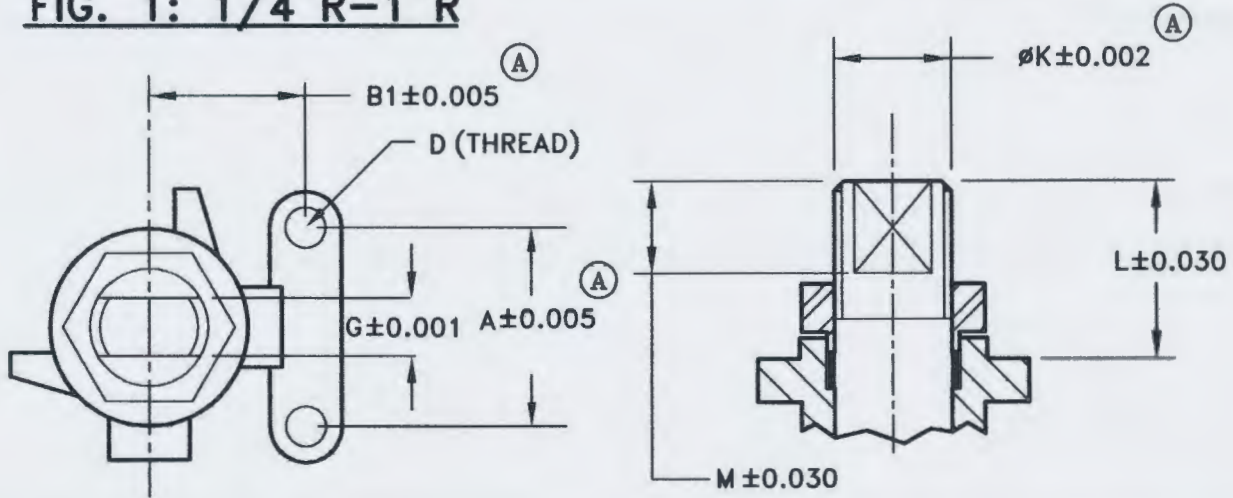


28-99801

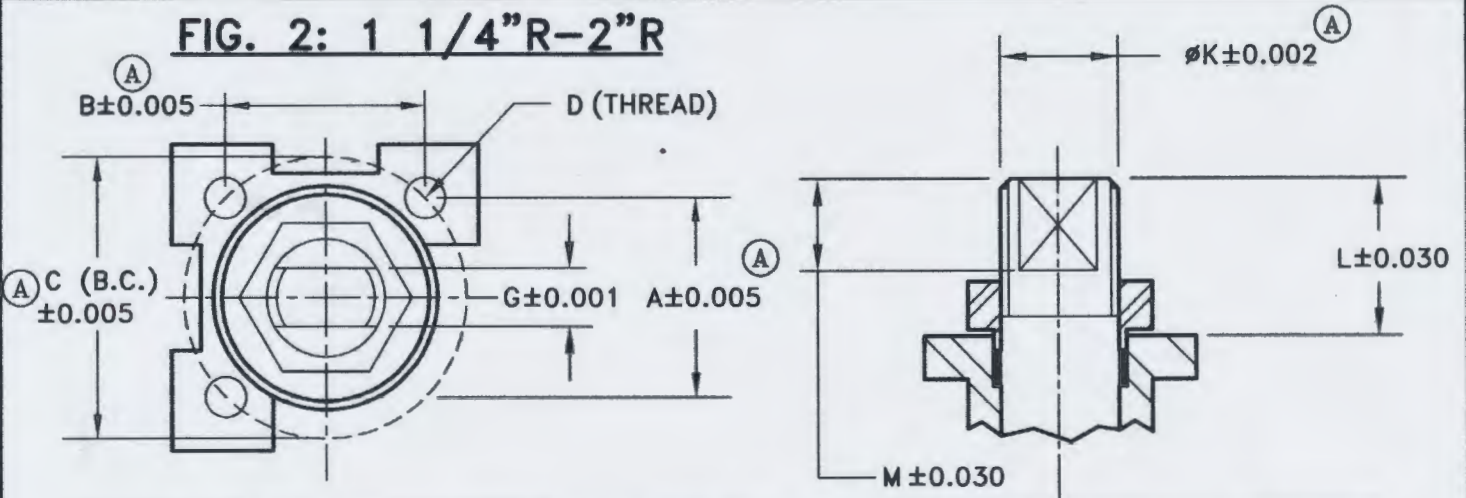
# TOP MOUNTING DIMENSIONS FOR MODEL NO. 1/2"-2" 9923R/9933R

NO	DESCRIPTION	DATE	BY
A	MEC 06045	8/01/06	DW
B	MEC 11014	2/21/11	DW

**FIG. 1: 1/4"R-1"R**




**FIG. 2: 1 1/4"R-2"R**



VALVE SIZE	FIG. #	DIMENSIONS (INCHES)										
		A	B	B1	C (B.C.)	D (THREAD)	MTG	G	øK	L	M	
1/4"-1/2"	1	1.110	-	0.50	-	M5	(B)	-	0.205	0.303	0.97	0.40
3/4"	1	1.366	-	0.90	-	M5	(B)	-	0.244	0.42	1.20	0.51
1"	1	1.366	-	0.90	-	M5	(B)	-	0.244	0.42	1.17	0.51
1 1/4"	2	1.402	1.402	-	ø1.97	M6	(B)	F05	0.366	0.61	1.06	0.67
1 1/2"	2	1.402	1.402	-	ø1.97	M6	(B)	F05	0.366	0.61	1.06	0.71
2"	2	M802	1.402	-	ø1.97	M6	(B)	F05	0.366	0.61	1.06	0.71

A,B,B1 & C (B.C.)= MOUNTING PAD SPACING  
 D = THREAD OF MOUNTING HOLES  
 G = ACROSS FLAT ON STEM  
 K = STEM DIAMETER  
 L = DISTANCE TO TOP OF STEM FROM MTG PAD  
 M = DEPTH OF FLATS "G"



**MARWIN**  
Ball Valves

RICHARDS INDUSTRIES  
 3170 Wasson Rd.  
 Cincinnati, Ohio 45209  
 Telephone (513) 533-5600  
 Fax (513) 533-7343

DR. BY	DW	03/31/05	28-99801
CHK. BY	88/H	2/22/11	