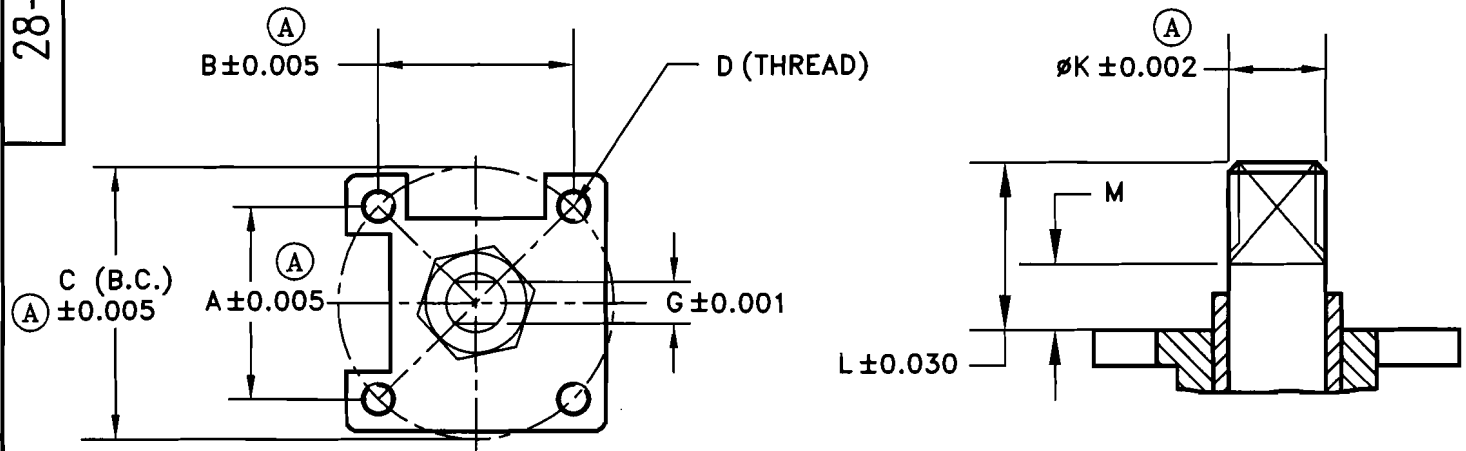


28-88804

NO	DESCRIPTION	DATE	BY
A	MEC 06045	8/01/06	DW

TOP MOUNTING DIMENSIONS FOR MODEL NO. 1/2"-4" KF8933F



- A, B & C (B.C.) = MOUNTING PAD SPACING
- D = THREAD OF MOUNTING HOLES
- G = ACROSS FLAT ON STEM
- K = STEM DIAMETER
- L = DISTANCE TO TOP OF STEM FROM MOUNTING PAD
- M = DISTANCE TO BOTTOM OF STEM THREAD FROM MOUNTING PAD

VALVE SIZE	DIMENSIONS (INCHES)								
	A	B	C (B.C.)	D (THREAD)	MTG PATTERN	G	ØK	L	M
1/2"	1.168	1.168	Ø1.65	M5	F04	0.197	0.315	0.57	0.28
3/4"	1.168	1.168	Ø1.65	M5	F04	0.276	0.394	0.69	0.35
1"	1.392	1.392	Ø1.97	M6	F05	0.276	0.394	0.79	0.39
1 1/2"	1.392	1.392	Ø1.97	M6	F05	0.354	0.472	1.00	0.51
2"	1.952	1.952	Ø2.76	M8	F07	0.354	0.472	0.96	0.51
2 1/2"	1.952	1.952	Ø2.76	M8	F07	0.472	0.787	1.44	0.75
3"	2.840	2.840	Ø4.02	M10	F10	0.472	0.787	1.46	0.75
4"	2.840	2.840	Ø4.02	M10	F10	0.630	0.945	1.61	0.84

MARWIN

Ball Valves

RICHARDS INDUSTRIES
3170 Wasson Rd.
Cincinnati, Ohio 45209
Telephone (513) 533-5600
Fax (513) 533-7343

DR. BY	DW	03/31/05	28-88804
CHK. BY			