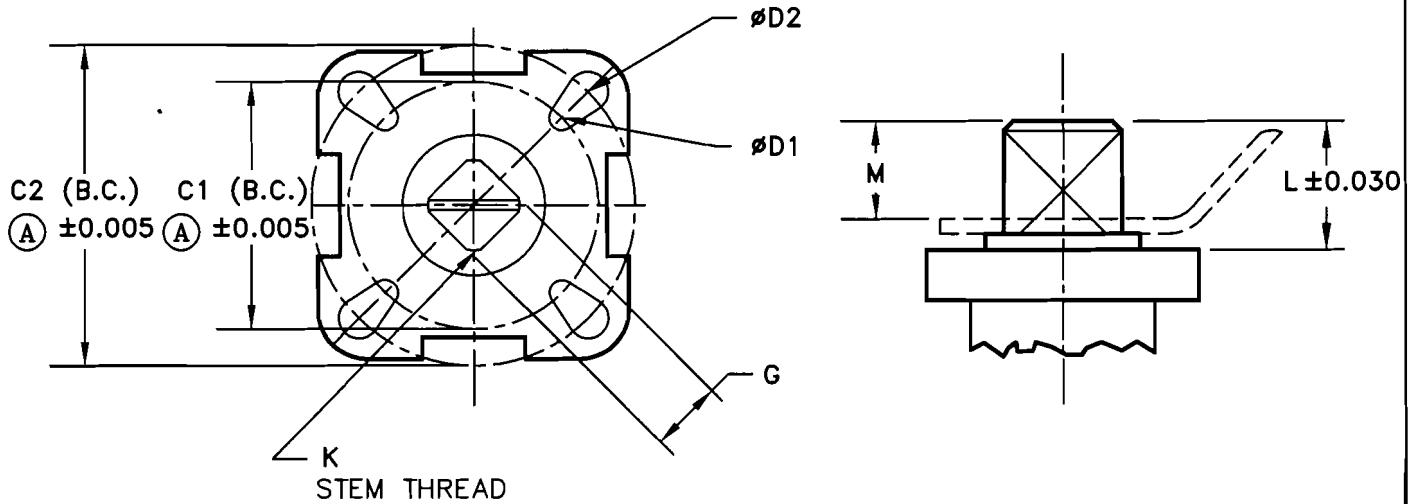


28-47800

TOP MOUNTING DIMENSIONS FOR MODEL NO. 1/2"-4" 4700F-A

NO	DESCRIPTION	DATE	BY
A	MEC 06045	7/31/06	DW
B	MEC 06070	11/14/06	DW



ØC1 (B.C.) & ØC2 (B.C.) = MOUNTING PAD SPACING

ØD1, ØD2 = DIA OF MOUNTING HOLES

G = ACROSS FLAT ON STEM (HANDLE)

K = STEM THREAD

(EXAMPLE: M12 X 1.25 OR 1/2-13)

L = DISTANCE TO TOP OF STEM FROM MOUNTING PAD

M = DISTANCE TO TOP OF STEM FROM TOP OF HANDLE

VALVE SIZE	DIMENSIONS									
	ØC1 (B.C.) in.	ØD1 in.	ISO PATTERN	ØC2 (B.C.) in.	ØD2 in.	ISO PATTERN	G mm (in.)	K	L in.	M in.
1/2"	1.42	0.236	F03	1.65	0.236	F04	9 (0.352/0.348) (B)	7/16-20UNF	0.315	0.164
3/4"	1.42	0.236	F03	1.65	0.236	F04	9 (0.352/0.348) (B)	7/16-20UNF	0.315	0.164
1"	1.65	0.236	F04	1.97	0.276	F05	11 (0.431/0.427) (B)	9/16-18UNF	0.394	0.213
1 1/4"	1.65	0.236	F04	1.97	0.276	F05	11 (0.431/0.427) (B)	9/16-18UNF	0.394	0.213
1 1/2"	1.97	0.276	F05	2.76	0.354	F07	14 (0.549/0.545) (B)	M18 X 2.5	0.583	0.362
2"	1.97	0.276	F05	2.76	0.354	F07	14 (0.549/0.545) (B)	M18 X 2.5	0.583	0.362
2 1/2"	2.76	0.354	F07	4.02	0.433	F10	17 (0.667/0.663) (B)	M22 X 1.5	0.673	0.589
3"	2.76	0.354	F07	4.02	0.433	F10	17 (0.667/0.663) (B)	M22 X 1.5	0.673	0.589
4"	2.76	0.354	F07	4.02	0.433	F10	17 (0.667/0.663) (B)	M22 X 1.5	0.673	0.589

MARWIN
Ball Valves

RICHARDS INDUSTRIES
3170 Wasson Rd.
Cincinnati, Ohio 45209
Telephone (513) 533-5600
Fax (513) 533-7343

DR. BY	dw	03/21/05	28-47800
CHK. BY			