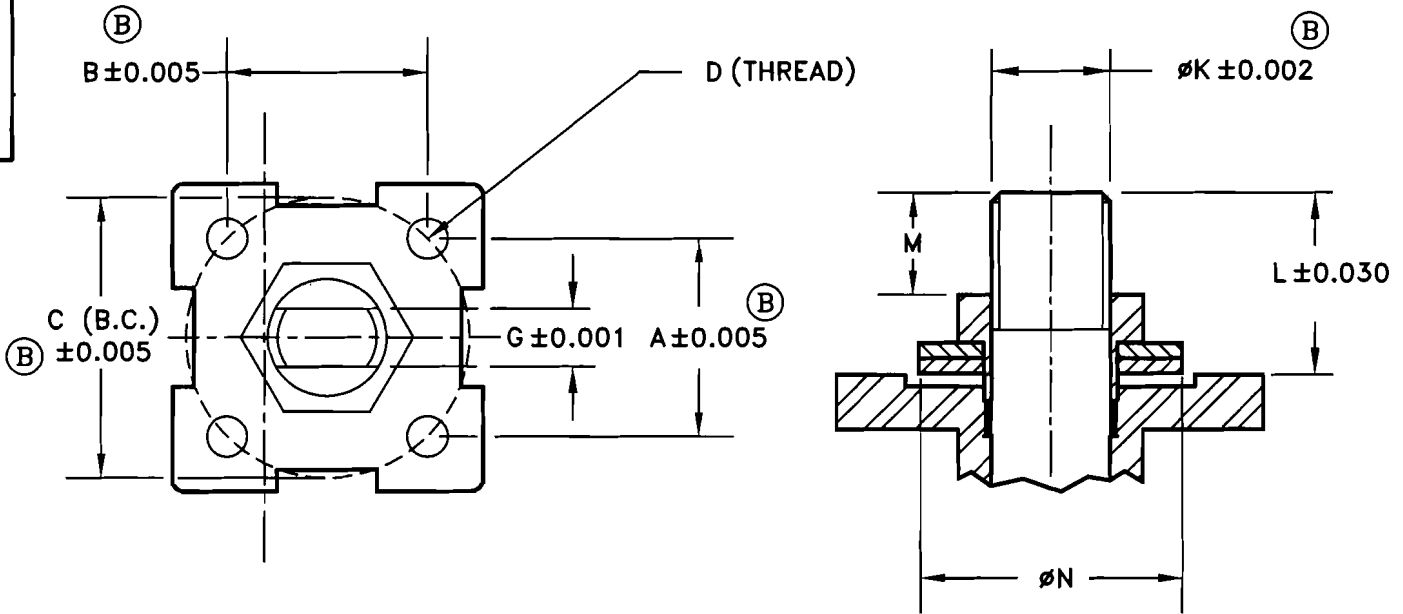


28-20805

TOP MOUNTING DIMENSIONS FOR MODEL NO. 2"F-6"F 3W-2R33/2S33

NO	DESCRIPTION	DATE	BY
A	WAS M12	4/03/06	DW
B	MEC 06045	7/31/06	DW



- A, B & C (B.C.) = MOUNTING PAD SPACING
- D = THREAD OF MOUNTING HOLES
- G = ACROSS FLAT ON STEM
- K = STEM DIAMETER
- L = DISTANCE TO TOP OF STEM FROM MOUNTING PAD
- M = DISTANCE TO TOP OF STEM FROM TOP OF NUT (STOP PLATE)
- ∅N = BELLEISLE O.D.

VALVE SIZE	DIMENSIONS (INCHES)									
	A	B	C (B.C.)	D (THREAD)	MTG PATTERN	G	∅K	L	M	∅N
2"	1.952	1.952	∅2.76	M8	F07	0.374	0.63	0.93	0.55	1.28
2 1/2"	2.842	2.842	∅4.02	M10 (A)	F10	0.670	0.88	1.63	0.88	1.75
3"	2.842	2.842	∅4.02	M10 (A)	F10	0.670	0.88	1.63	0.75	1.75
4"	2.842	2.842	∅4.02	M10 (A)	F10	0.670	1.13	1.87	1.02	2.20
6"	3.479	3.479	∅4.92	M12	F12	0.906	1.34	2.56	1.44	2.75


MARWIN
 Ball Valves

RICHARDS INDUSTRIES
 3170 Wasson Rd.
 Cincinnati, Ohio 45209
 Telephone (513) 533-5600
 Fax (513) 533-7343

DR. BY	DW	03/18/05	28-20805
CHK. BY			