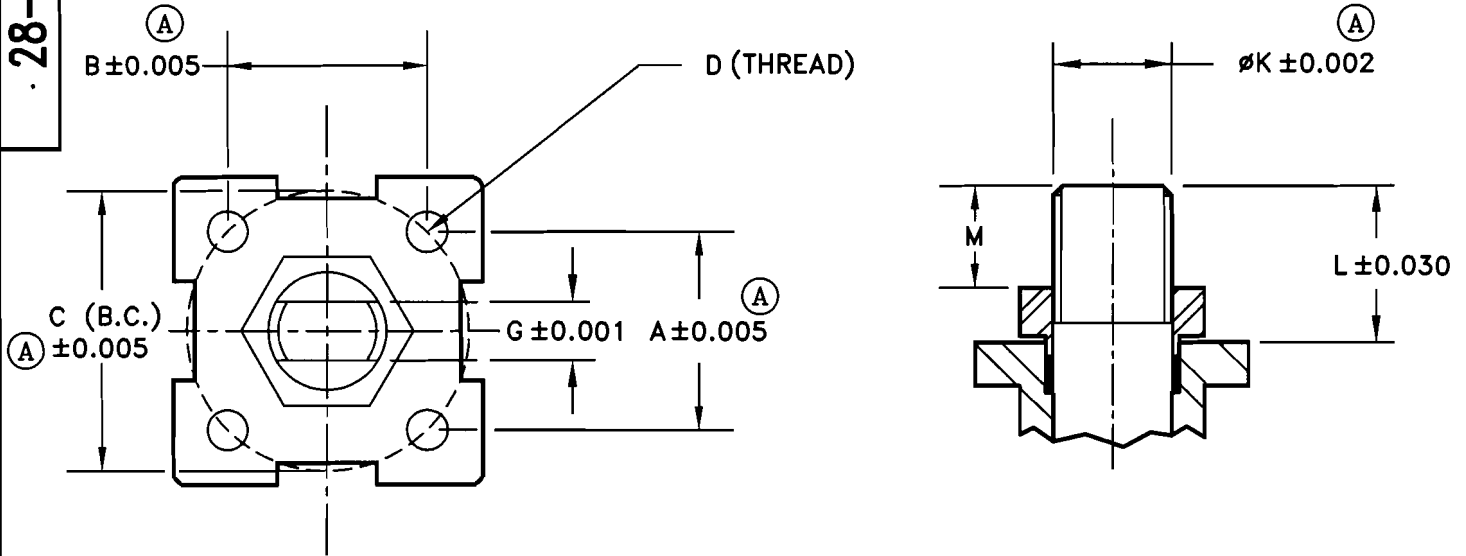


28-20804

NO	DESCRIPTION	DATE	BY
A	MEC 08045	7/31/06	DW

TOP MOUNTING DIMENSIONS

FOR MODEL NO. 3/8" F-1 1/2" F 3W-2P33/2Q33



- A, B & C (B.C.) = MOUNTING PAD SPACING
- D = THREAD OF MOUNTING HOLES
- G = ACROSS FLAT ON STEM
- K = STEM DIAMETER
- L = DISTANCE TO TOP OF STEM FROM MOUNTING PAD
- M = DISTANCE TO TOP OF STEM FROM TOP OF NUT (STOP PLATE)

VALVE SIZE	DIMENSIONS (INCHES)									
	A	B	C (B.C.)	D (THREAD)	MTG PATTERN	G	ØK	L	M	
3/8	1.168	1.168	Ø1.65	M5	F04	0.248	0.37	0.49	0.22	
1/2	1.168	1.168	Ø1.65	M5	F04	0.248	0.37	0.71	0.44	
3/4	1.392	1.392	Ø1.97	M6	F05	0.315	0.44	0.69	0.45	
1	1.392	1.392	Ø1.97	M6	F05	0.315	0.44	0.79	0.47	
1 1/4-1 1/2	1.952	1.952	Ø2.76	M8	F07	0.374	0.63	0.93	0.55	

MARWIN
Ball Valves

RICHARDS INDUSTRIES
3170 Wasson Rd.
Cincinnati, Ohio 45209
Telephone (513) 533-5600
Fax (513) 533-7343

DR. BY	DW	03/18/05
CHK. BY		

28-20804