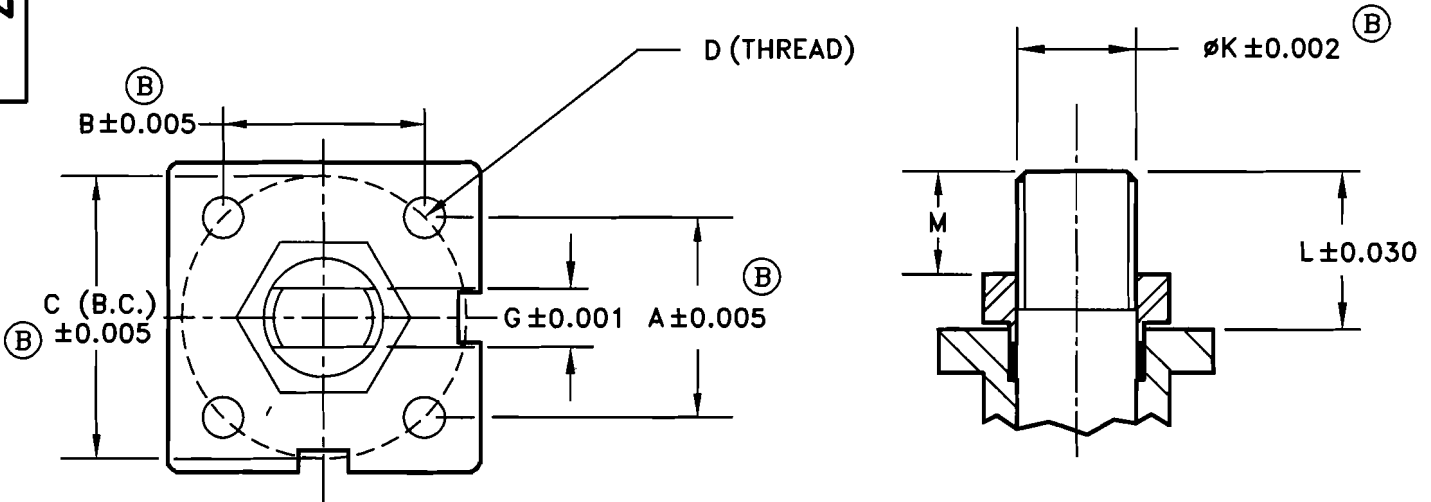


28-20803

NO	DESCRIPTION	DATE	BY
A	WAS M12	4/03/06	DW
B	MEC 06045	7/31/08	DW

TOP MOUNTING DIMENSIONS FOR MODEL NO. 1/2"-8" 2233/2333F (300# FE)



- A, B & C (B.C.) = MOUNTING PAD SPACING
- D = THREAD OF MOUNTING HOLES
- G = ACROSS FLAT ON STEM
- K = STEM DIAMETER
- L = DISTANCE TO TOP OF STEM FROM MOUNTING PAD
- M = DISTANCE TO TOP OF STEM FROM TOP OF NUT (STOP PLATE)

VALVE SIZE	DIMENSIONS (INCHES)								
	A	B	C (B.C.)	D (THREAD)	MTG PATTERN	G	ØK	L	M
1/2"	1.168	1.168	Ø1.65	M5	F04	0.25	0.38	0.71	0.44
3/4"	1.168	1.168	Ø1.65	M5	F04	0.25	0.38	0.71	0.44
1"	1.392	1.392	Ø1.97	M6	F05	0.315	0.44	0.79	0.47
1 1/2"	1.952	1.952	Ø2.76	M8	F07	0.374	0.63	0.93	0.55
2"	1.952	1.952	Ø2.76	M8	F07	0.374	0.63	0.93	0.55
2 1/2"	2.842	2.842	Ø4.02	M10 (A)	F10	0.670	0.88	1.63	0.88
3"	2.842	2.842	Ø4.02	M10 (A)	F10	0.670	0.88	1.63	0.75
4"	2.842	2.842	Ø4.02	M10 (A)	F10	0.670	1.125	1.87	1.02
6"	3.479	3.479	Ø4.92	M12	F12	0.906	1.34	2.56	1.44
8"	3.479	3.479	Ø4.92	M12	F12	0.906	1.34	2.56	1.44

MARWIN
Ball Valves

RICHARDS INDUSTRIES
3170 Wasson Rd.
Cincinnati, Ohio 45209
Telephone (513) 533-5600
Fax (513) 533-7343

DR. BY	DW	03/15/05
CHK. BY		

28-20803