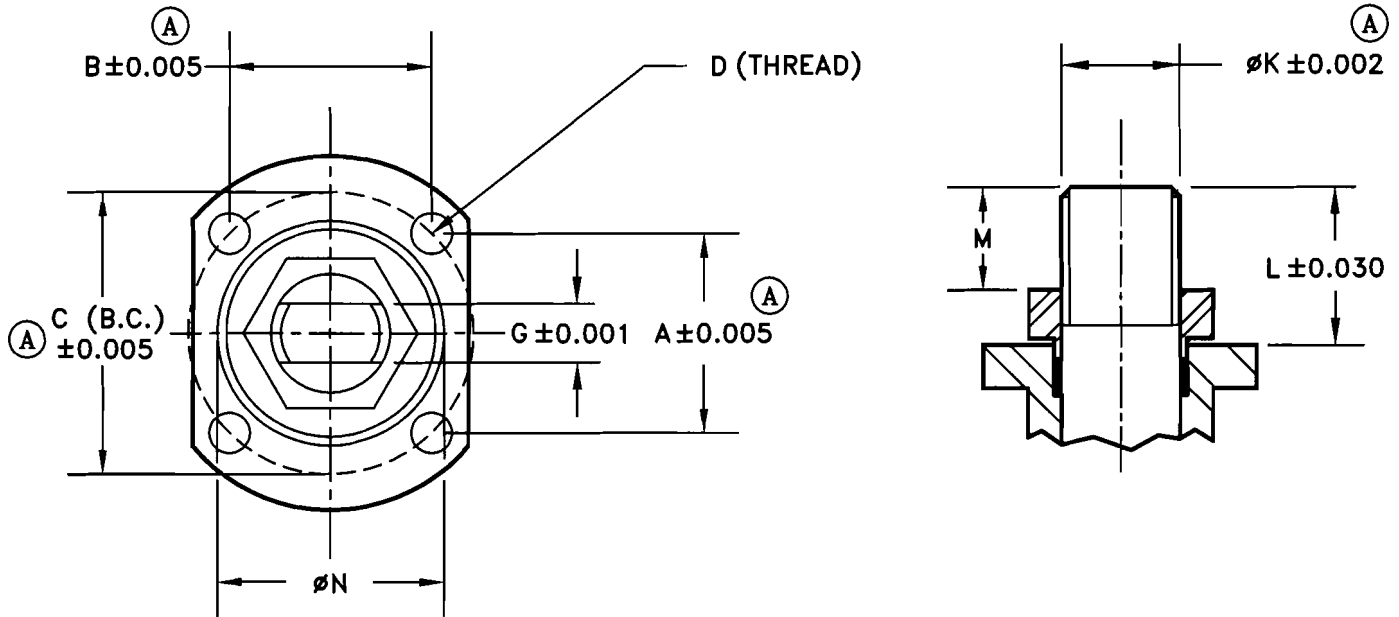


28-20800

NO	DESCRIPTION	DATE	BY
A	MEC 06045	7/31/06	DW

TOP MOUNTING DIMENSIONS FOR MODEL NO. 1"-4" 2233R/2333R (ED)




- A, B & C (B.C.) = MOUNTING PAD SPACING
- D = THREAD OF MOUNTING HOLES
- G = ACROSS FLAT ON STEM
- K = STEM DIAMETER
- L = DISTANCE TO TOP OF STEM FROM MOUNTING PAD
- M = DISTANCE TO TOP OF STEM FROM TOP OF NUT (STOP PLATE)
- N = HUB O.D.

VALVE SIZE	DIMENSIONS (INCHES)									
	A	B	C (B.C.)	D (THREAD)	MTG PATTERN	G	øK	L	M	øN
1"	1.170	1.170	ø1.65	M5	F04	0.248	0.37	0.63		1.19
1.5"	1.392	1.392	ø1.97	M6	F05	0.315	0.43	0.83		1.38
2" NEW ¹	1.392	1.392	ø1.97	M6	F05	0.392	0.56	0.93	0.51	1.38
2" OLD ²						0.315	0.44		0.58	
3"	1.952	1.952	ø2.76	M8	F07	0.669	0.88	1.84	0.92	-
4"	1.952	1.952	ø2.76	M8	F07	0.669	0.88	1.81	0.98	-

NOTES:

- ¹ STEM DESIGN AFTER 03/03
- ² STEM DESIGN BEFORE 03/03



MARWIN
Ball Valves

RICHARDS INDUSTRIES
3170 Wasson Rd.
Cincinnati, Ohio 45209
Telephone (513) 533-5600
Fax (513) 533-7343

DR. BY	DW	03/15/05	28-20800
CHK. BY			