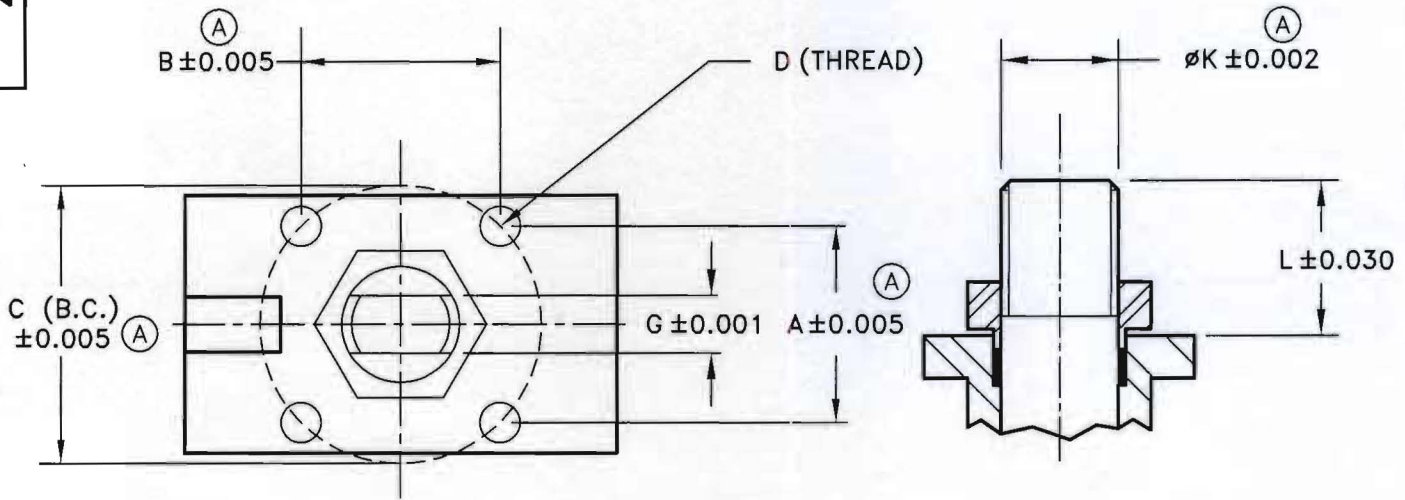


28-10800

# TOP MOUNTING DIMENSIONS FOR MODEL NO. 1/2"F-2"F 10K

NO	DESCRIPTION	DATE	BY
A	MEC 08045	07/31/06	DW



- A, B & C (B.C.) = MOUNTING PAD SPACING
- D = THREAD OF MOUNTING HOLES
- G = ACROSS FLAT ON STEM
- K = STEM DIAMETER
- L = DISTANCE TO TOP OF STEM FROM MOUNTING PAD

VALVE SIZE	DIMENSIONS (INCHES)							
	A	B	C (B.C.)	D (THREAD)	MTG PATTERN	G	ØK	L
0.5"F	0.47	1.11	-	10-24UNC	-	0.294	0.467	0.36
0.75"F	1.168	1.168	Ø1.65	10-24UNC	F04	0.294	0.467	0.51
1"F	1.168	1.168	Ø1.65	10-24UNC	F04	0.351	0.587	0.75
1.25"F-2.0"F	1.952	1.952	Ø2.76	5/16-18UNC	F07	0.628	0.860	1.30



**MARWIN**  
Ball Valves

RICHARDS INDUSTRIES  
3170 Wasson Rd.  
Cincinnati, Ohio 45209  
Telephone (513) 533-5600  
Fax (513) 533-7343

DR. BY	DW	03/15/05	28-10800
CHK. BY			